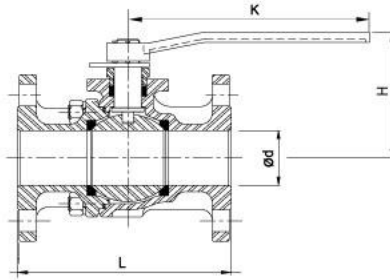


TWO-PIECE FLANGE BALL VALVES

F601 ANSI CLASS 150 LB



SPECIFICATIONS

- Size Range 1/2"~10"
- Blow-out proof stem
- Anti-static design is standard
- **Temperature range** -20° to 450° F
- **Face to face** ASME B16.10
- **Flange dimensions** ASME B16.5
- **Mounting pad** ISO 5211
- **Pressure rating** ANSI 150

MATERIALS LIST

Designation	Material
BODY&CAP	CF8 / CF8M / WCB
SEAT	PTFE (5"-10" PTFE+15%GF)
HANDLE	C.S
BALL	CF8 CF8M CF8
STEM	SUS304 SUS316 SUS304

DIMENSIONS UNIT:mm

SIZE	ød	K	H	L	SIZE	ød	K	H	L
1/2"	15	145	73	108	3"	80	320	151	203
3/4"	20	145	79	117	4"	100	320	165	229
1"	25	165	91	127	5"	125	514	207	356
1-1/4"	32	165	94	140	6"	152	514	225	394
1-1/2"	38	230	113	165	8"	200	1000	291	457
2"	50	230	122	178	10"	250	1000	347	533
2-1/2"	65	230	144	190					

SPECIFICATIONS

- Size Range 1/2"~10"
- Blow-out proof stem
- Anti-static design is standard
- **Temperature range** -20° to 450° F
- **Face to face** ASME B16.10
- **Flange dimensions** JIS B2238
- **Mounting pad** ISO 5211
- **Pressure rating** JIS 10K

MATERIALS LIST

Designation	Material
BODY&CAP	SCS13A / SCS14A / SCW410
SEAT	PTFE (5"-10" PTFE+15%GF)
HANDLE	C.S
BALL	SCS13A SCS14A SCS13A
STEM	SUS304 SUS316 SUS304

DIMENSIONS UNIT:mm

SIZE	ød	K	H	L	SIZE	ød	K	H	L
1/2"	15	145	73	108	3"	80	320	151	203
3/4"	20	145	79	117	4"	100	320	165	229
1"	25	165	91	127	5"	125	514	207	356
1-1/4"	32	165	94	140	6"	152	514	225	394
1-1/2"	38	230	113	165	8"	200	1000	291	457
2"	50	230	122	178	10"	250	1000	347	533
2-1/2"	65	230	144	190					

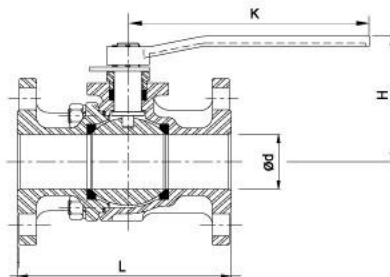
SPECIFICATIONS

- Size Range 1/2"~10"
- Blow-out proof stem
- Anti-static design is standard
- **Temperature range** -20° to 450° F
- **Face to face** DIN 3202 F4
- **Flange dimensions** EN1092-1
- **Mounting pad** ISO 5211
- **Pressure rating** PN16

MATERIALS LIST

Designation	Material
BODY&CAP	1.4308 / 1.4408 / 1.0619
SEAT	PTFE (5"-10" PTFE+15%GF)
HANDLE	C.S
BALL	1.4308 / 1.4408 / 1.4308
STEM	SUS304 SUS316 SUS304

F603 PN16



DIMENSIONS UNIT:mm

SIZE	ød	K	H	L	SIZE	ød	K	H	L
1/2"	15	145	73	130	3"	80	320	151	310
3/4"	20	145	79	150	4"	100	320	165	350
1"	25	165	91	160	5"	125	514	207	400
1-1/4"	32	165	94	180	6"	152	514	225	480
1-1/2"	38	230	113	200	8"	200	1000	291	600
2"	50	230	122	230	10"	250	1000	347	730
2-1/2"	65	230	144	290					